


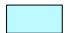

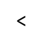


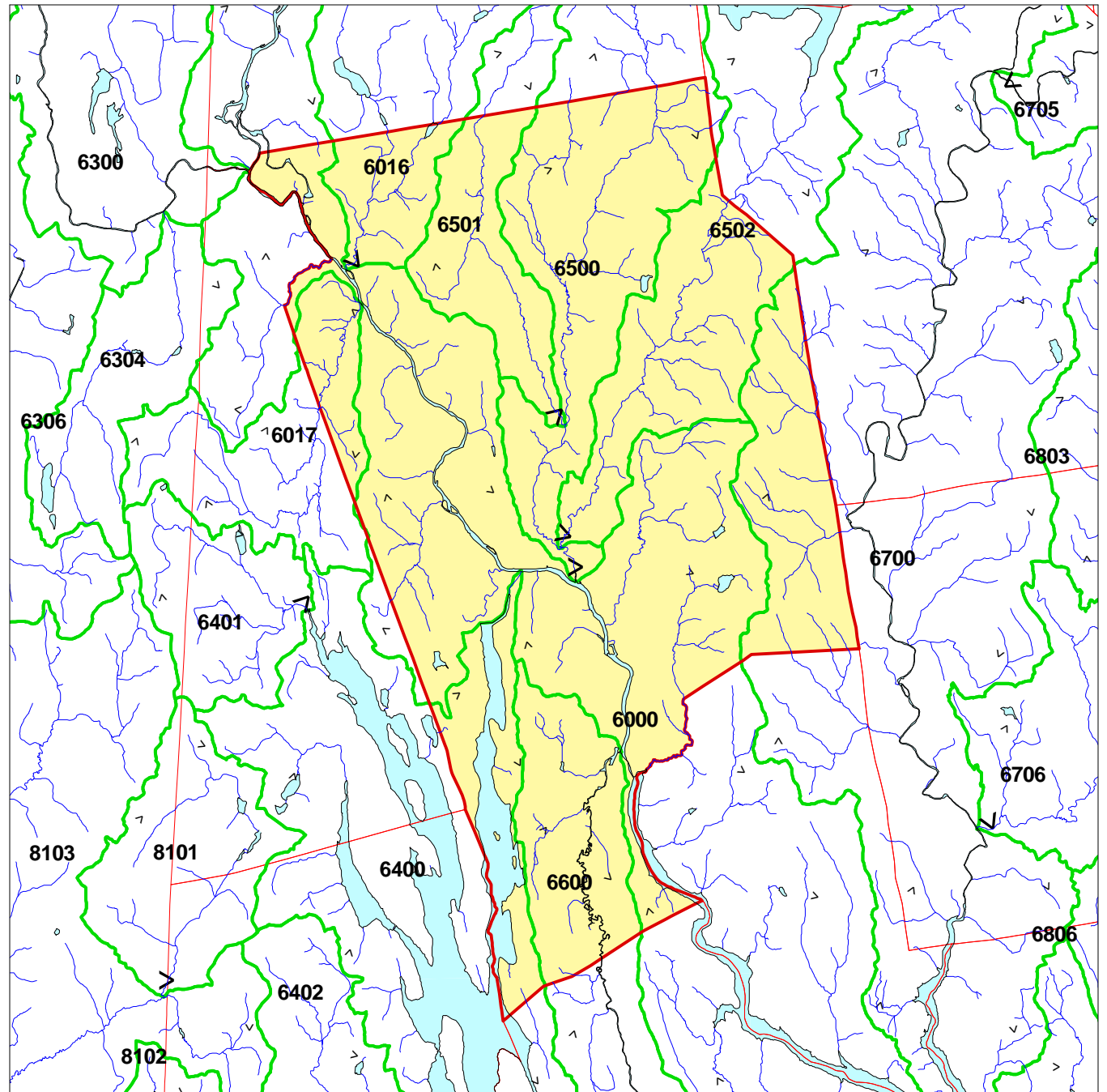
NEW MILFORD CONNECTICUT SUBREGIONAL BASINS AND SURFACE WATER FLOW DIRECTIONS

Explanation

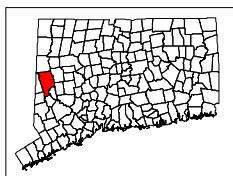
-  Town Boundary
-  Subregional Watershed Boundary
- 4201** Subrg. Basin ID# - as designated by CTDEP
-  Watercourse  Open Water
-  Basin Outlet
-  Surface Water Flow Direction

The table provides statistics for each subregional basin. Shown are the areas of the basin within the town, the percentage for that area, and the percent of the town covered by each basin.

Sbas_nc	AcresInTw	Percofb	Percoftwn
6000	14436.68	3.6	35.3
6016	1644.81	27.5	4.0
6017	1180.93	25.4	2.9
6400	2582.04	14.6	6.3
6500	6601.71	52.7	16.2
6501	2874.28	76.4	7.0
6502	4508.99	27.9	11.0
6600	3480.45	17.3	8.5
6700	3556.79	7.8	8.7



Town Area: 40867 Acres



Digital layers provided by the CTDEP.
Map composed by the NEMO project.
For educational purposes only.

