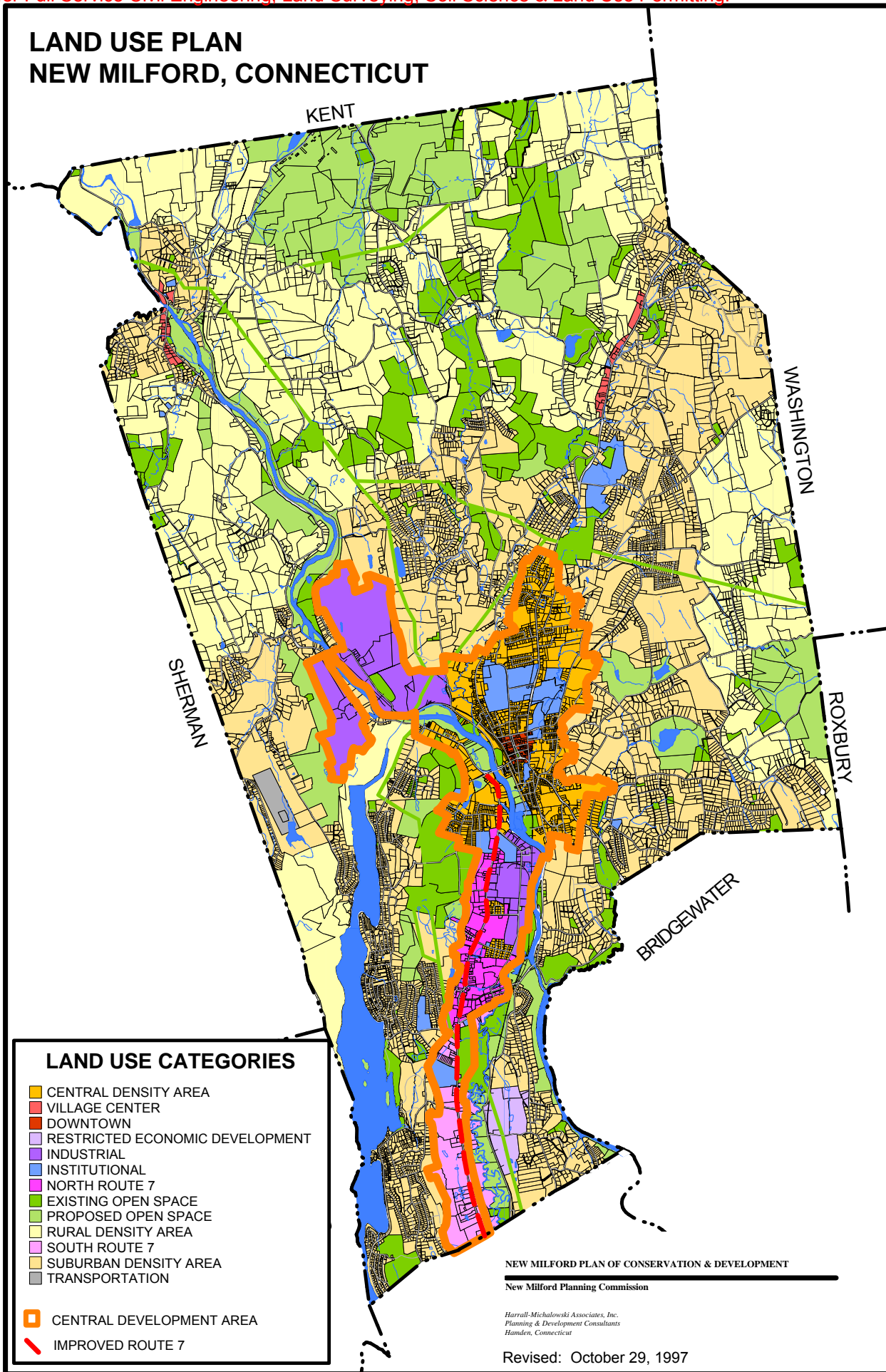


# LAND USE PLAN NEW MILFORD, CONNECTICUT



## LAND USE CATEGORIES

- CENTRAL DENSITY AREA
  - VILLAGE CENTER
  - DOWNTOWN
  - RESTRICTED ECONOMIC DEVELOPMENT
  - INDUSTRIAL
  - INSTITUTIONAL
  - NORTH ROUTE 7
  - EXISTING OPEN SPACE
  - PROPOSED OPEN SPACE
  - RURAL DENSITY AREA
  - SOUTH ROUTE 7
  - SUBURBAN DENSITY AREA
  - TRANSPORTATION
- 
- CENTRAL DEVELOPMENT AREA
  - IMPROVED ROUTE 7

NEW MILFORD PLAN OF CONSERVATION & DEVELOPMENT

New Milford Planning Commission

Harrall-Michalowski Associates, Inc.  
Planning & Development Consultants  
Hamden, Connecticut

Revised: October 29, 1997