


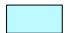

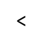


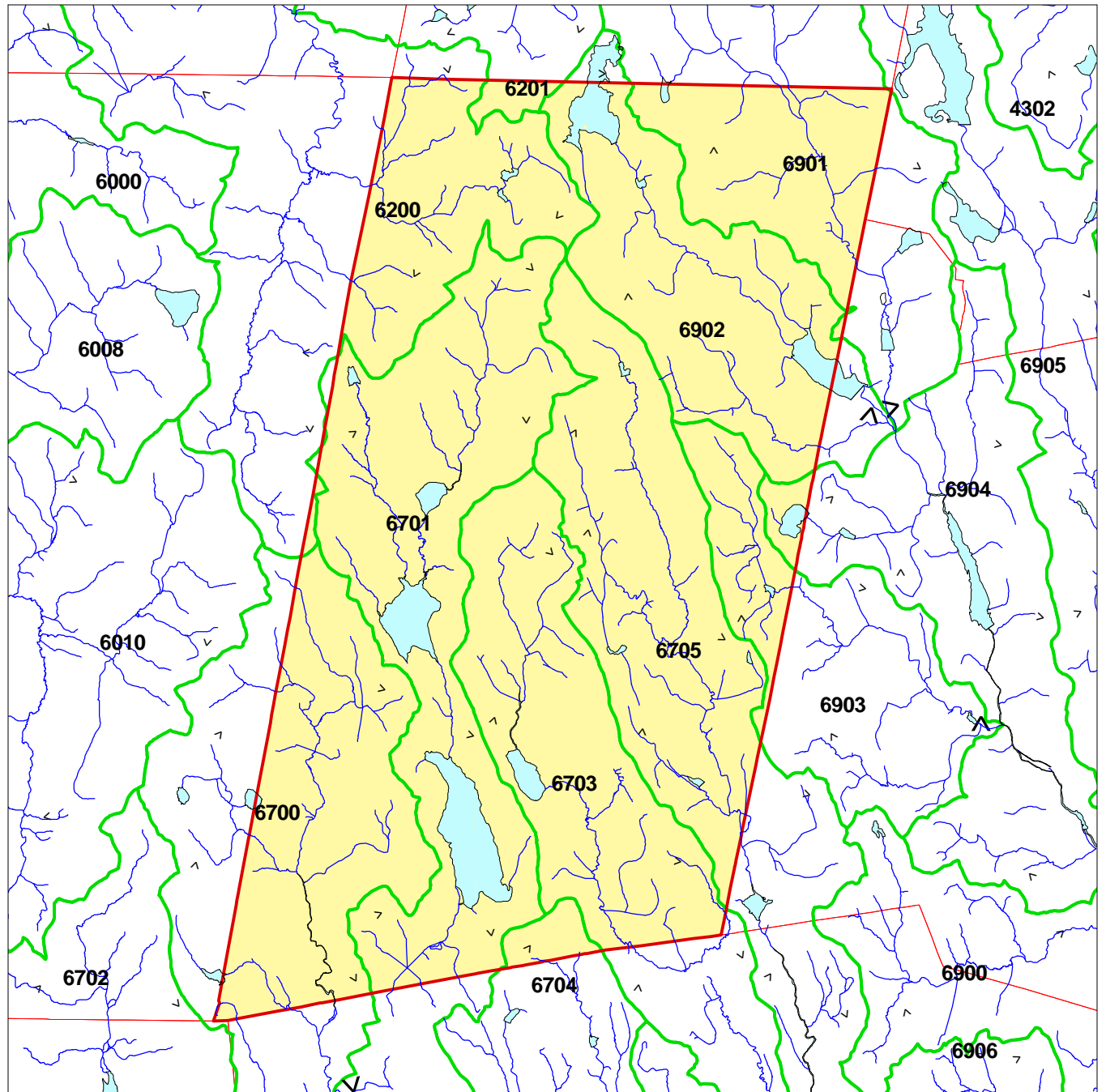
GOSHEN CONNECTICUT SUBREGIONAL BASINS AND SURFACE WATER FLOW DIRECTIONS

Explanation

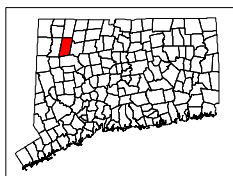
-  Town Boundary
-  Subregional Watershed Boundary
- 4201** Subrg. Basin ID# - as designated by CTDEP
-  Watercourse  Open Water
-  Basin Outlet
-  Surface Water Flow Direction

The table provides statistics for each subregional basin. Shown are the areas of the basin within the town, the percentage for that area, and the percent of the town covered by each basin.

Sbas_no	AcresInTw	Percofb	Percoftwn
6200	2649.96	15.6	9.2
6201	167.32	4.7	0.6
6700	3804.80	8.4	13.2
6701	6324.46	86.8	21.9
6703	3993.29	73.1	13.8
6704	255.08	6.6	0.9
6705	4536.54	17.6	15.7
6901	2217.07	28.1	7.7
6902	3791.76	87.9	13.1
6903	981.57	27.6	3.4
6904	203.59	3.4	0.7
6905	0.42	0.0	0.0



Town Area: 28926 Acres



Digital layers provided by the CTDEP.
Map composed by the NEMO project.
For educational purposes only.

